

# Luke Paulin

## Print and Graphic Design Portfolio



LUXURY HOME  
Cover Home



OCEANSIDE RESIDENTIAL WORK OF ART

Olowalu, Maui | 2,562 SQFT | .54 AC | 1BR/3.5BA | MLS# 388443 | \$7,995,000  
This Olowalu residence, fronting conservation land and the beach, possesses the raw experience of the island of Maui through its world-class architecture & interior design. The compelling presence of the indigo blue Pacific, punctuated by the cerulean horizon, is wonderfully distracting as you pass through the hand-carved oak 'Menehune' columns & pivotal front doors. Valuable glass walls rise from the etched acid-washed marble floors along open-air corridors with hand-carved limestone Batana Tree wall reliefs, Kahili Tiki carvings, waterways & gardens. Birdage pendant lighting & Peacock wall sconces Enhancing the



\$7,995,000



Robert H. 'Robbie' Dein  
Broker-Owner, ABR, CRS, RSPS | RB-18798  
Maui Real Estate Advisors, LLC  
Direct: 808.250.3564  
Robbie@MauiRealEstateAdvisors.com



Kenneth M. 'Ken' Hayo  
Principal Broker-Owner | RB-15539  
Maui Real Estate Advisors, LLC  
Direct: 808.283.8435  
Ken@MauiRealEstateAdvisors.com



Maui's Only Realtor Recognized as a "Top 100 State of Hawaii Realtor" Among 15,000+ Hawaii Realtors (for 14 Consecutive Years),  
Top 100 Hawaii Realtors Hall of Fame, Hawaii Business Journal 2006-2019

ROBBIE & KEN • LISTED HOME BY  
Maui Meadows • 726 Kumulani Dr. • 4bd, 4ba • 3,160 sq ft



KE ALII OCEAN VILLAS

THESE 12 UNITS SOLD  
IN THE LAST 12 MONTHS  
A-102, A-204, A-302,  
B-105, B-204, C-302,  
D-103, E-101, E-103,  
H-102, H-103, M-102

AS OF 8/10/21:  
ONLY 1 ACTIVE UNIT  
0 PENDING UNITS



WAILEA EKAHI SOLD UNITS:  
1C, 2E, 3B, 16A, 19B, 20G, 21A, 22E, 24A,  
24B, 25A, 25B, 25C, 25D, 25E, 25F,  
25G, 25H, 25I, 25J, 25K, 25L, 25M, 25N,  
25O, 25P, 25Q, 25R, 25S, 25T, 25U, 25V,  
25W, 25X, 25Y, 25Z, 26A, 26B, 26C, 26D,  
26E, 26F, 26G, 26H, 26I, 26J, 26K, 26L,  
26M, 26N, 26O, 26P, 26Q, 26R, 26S, 26T,  
26U, 26V, 26W, 26X, 26Y, 26Z, 27A, 27B,  
27C, 27D, 27E, 27F, 27G, 27H, 27I, 27J,  
27K, 27L, 27M, 27N, 27O, 27P, 27Q, 27R,  
27S, 27T, 27U, 27V, 27W, 27X, 27Y, 27Z,  
28A, 28B, 28C, 28D, 28E, 28F, 28G, 28H,  
28I, 28J, 28K, 28L, 28M, 28N, 28O, 28P,  
28Q, 28R, 28S, 28T, 28U, 28V, 28W, 28X,  
28Y, 28Z, 29A, 29B, 29C, 29D, 29E, 29F,  
29G, 29H, 29I, 29J, 29K, 29L, 29M, 29N,  
29O, 29P, 29Q, 29R, 29S, 29T, 29U, 29V,  
29W, 29X, 29Y, 29Z, 30A, 30B, 30C, 30D,  
30E, 30F, 30G, 30H, 30I, 30J, 30K, 30L,  
30M, 30N, 30O, 30P, 30Q, 30R, 30S, 30T,  
30U, 30V, 30W, 30X, 30Y, 30Z, 31A, 31B,  
31C, 31D, 31E, 31F, 31G, 31H, 31I, 31J,  
31K, 31L, 31M, 31N, 31O, 31P, 31Q, 31R,  
31S, 31T, 31U, 31V, 31W, 31X, 31Y, 31Z,  
32A, 32B, 32C, 32D, 32E, 32F, 32G, 32H,  
32I, 32J, 32K, 32L, 32M, 32N, 32O, 32P,  
32Q, 32R, 32S, 32T, 32U, 32V, 32W, 32X,  
32Y, 32Z, 33A, 33B, 33C, 33D, 33E, 33F,  
33G, 33H, 33I, 33J, 33K, 33L, 33M, 33N,  
33O, 33P, 33Q, 33R, 33S, 33T, 33U, 33V,  
33W, 33X, 33Y, 33Z, 34A, 34B, 34C, 34D,  
34E, 34F, 34G, 34H, 34I, 34J, 34K, 34L,  
34M, 34N, 34O, 34P, 34Q, 34R, 34S, 34T,  
34U, 34V, 34W, 34X, 34Y, 34Z, 35A, 35B,  
35C, 35D, 35E, 35F, 35G, 35H, 35I, 35J,  
35K, 35L, 35M, 35N, 35O, 35P, 35Q, 35R,  
35S, 35T, 35U, 35V, 35W, 35X, 35Y, 35Z,  
36A, 36B, 36C, 36D, 36E, 36F, 36G, 36H,  
36I, 36J, 36K, 36L, 36M, 36N, 36O, 36P,  
36Q, 36R, 36S, 36T, 36U, 36V, 36W, 36X,  
36Y, 36Z, 37A, 37B, 37C, 37D, 37E, 37F,  
37G, 37H, 37I, 37J, 37K, 37L, 37M, 37N,  
37O, 37P, 37Q, 37R, 37S, 37T, 37U, 37V,  
37W, 37X, 37Y, 37Z, 38A, 38B, 38C, 38D,  
38E, 38F, 38G, 38H, 38I, 38J, 38K, 38L,  
38M, 38N, 38O, 38P, 38Q, 38R, 38S, 38T,  
38U, 38V, 38W, 38X, 38Y, 38Z, 39A, 39B,  
39C, 39D, 39E, 39F, 39G, 39H, 39I, 39J,  
39K, 39L, 39M, 39N, 39O, 39P, 39Q, 39R,  
39S, 39T, 39U, 39V, 39W, 39X, 39Y, 39Z,  
40A, 40B, 40C, 40D, 40E, 40F, 40G, 40H,  
40I, 40J, 40K, 40L, 40M, 40N, 40O, 40P,  
40Q, 40R, 40S, 40T, 40U, 40V, 40W, 40X,  
40Y, 40Z, 41A, 41B, 41C, 41D, 41E, 41F,  
41G, 41H, 41I, 41J, 41K, 41L, 41M, 41N,  
41O, 41P, 41Q, 41R, 41S, 41T, 41U, 41V,  
41W, 41X, 41Y, 41Z, 42A, 42B, 42C, 42D,  
42E, 42F, 42G, 42H, 42I, 42J, 42K, 42L,  
42M, 42N, 42O, 42P, 42Q, 42R, 42S, 42T,  
42U, 42V, 42W, 42X, 42Y, 42Z, 43A, 43B,  
43C, 43D, 43E, 43F, 43G, 43H, 43I, 43J,  
43K, 43L, 43M, 43N, 43O, 43P, 43Q, 43R,  
43S, 43T, 43U, 43V, 43W, 43X, 43Y, 43Z,  
44A, 44B, 44C, 44D, 44E, 44F, 44G, 44H,  
44I, 44J, 44K, 44L, 44M, 44N, 44O, 44P,  
44Q, 44R, 44S, 44T, 44U, 44V, 44W, 44X,  
44Y, 44Z, 45A, 45B, 45C, 45D, 45E, 45F,  
45G, 45H, 45I, 45J, 45K, 45L, 45M, 45N,  
45O, 45P, 45Q, 45R, 45S, 45T, 45U, 45V,  
45W, 45X, 45Y, 45Z, 46A, 46B, 46C, 46D,  
46E, 46F, 46G, 46H, 46I, 46J, 46K, 46L,  
46M, 46N, 46O, 46P, 46Q, 46R, 46S, 46T,  
46U, 46V, 46W, 46X, 46Y, 46Z, 47A, 47B,  
47C, 47D, 47E, 47F, 47G, 47H, 47I, 47J,  
47K, 47L, 47M, 47N, 47O, 47P, 47Q, 47R,  
47S, 47T, 47U, 47V, 47W, 47X, 47Y, 47Z,  
48A, 48B, 48C, 48D, 48E, 48F, 48G, 48H,  
48I, 48J, 48K, 48L, 48M, 48N, 48O, 48P,  
48Q, 48R, 48S, 48T, 48U, 48V, 48W, 48X,  
48Y, 48Z, 49A, 49B, 49C, 49D, 49E, 49F,  
49G, 49H, 49I, 49J, 49K, 49L, 49M, 49N,  
49O, 49P, 49Q, 49R, 49S, 49T, 49U, 49V,  
49W, 49X, 49Y, 49Z, 50A, 50B, 50C, 50D,  
50E, 50F, 50G, 50H, 50I, 50J, 50K, 50L,  
50M, 50N, 50O, 50P, 50Q, 50R, 50S, 50T,  
50U, 50V, 50W, 50X, 50Y, 50Z, 51A, 51B,  
51C, 51D, 51E, 51F, 51G, 51H, 51I, 51J,  
51K, 51L, 51M, 51N, 51O, 51P, 51Q, 51R,  
51S, 51T, 51U, 51V, 51W, 51X, 51Y, 51Z,  
52A, 52B, 52C, 52D, 52E, 52F, 52G, 52H,  
52I, 52J, 52K, 52L, 52M, 52N, 52O, 52P,  
52Q, 52R, 52S, 52T, 52U, 52V, 52W, 52X,  
52Y, 52Z, 53A, 53B, 53C, 53D, 53E, 53F,  
53G, 53H, 53I, 53J, 53K, 53L, 53M, 53N,  
53O, 53P, 53Q, 53R, 53S, 53T, 53U, 53V,  
53W, 53X, 53Y, 53Z, 54A, 54B, 54C, 54D,  
54E, 54F, 54G, 54H, 54I, 54J, 54K, 54L,  
54M, 54N, 54O, 54P, 54Q, 54R, 54S, 54T,  
54U, 54V, 54W, 54X, 54Y, 54Z, 55A, 55B,  
55C, 55D, 55E, 55F, 55G, 55H, 55I, 55J,  
55K, 55L, 55M, 55N, 55O, 55P, 55Q, 55R,  
55S, 55T, 55U, 55V, 55W, 55X, 55Y, 55Z,  
56A, 56B, 56C, 56D, 56E, 56F, 56G, 56H,  
56I, 56J, 56K, 56L, 56M, 56N, 56O, 56P,  
56Q, 56R, 56S, 56T, 56U, 56V, 56W, 56X,  
56Y, 56Z, 57A, 57B, 57C, 57D, 57E, 57F,  
57G, 57H, 57I, 57J, 57K, 57L, 57M, 57N,  
57O, 57P, 57Q, 57R, 57S, 57T, 57U, 57V,  
57W, 57X, 57Y, 57Z, 58A, 58B, 58C, 58D,  
58E, 58F, 58G, 58H, 58I, 58J, 58K, 58L,  
58M, 58N, 58O, 58P, 58Q, 58R, 58S, 58T,  
58U, 58V, 58W, 58X, 58Y, 58Z, 59A, 59B,  
59C, 59D, 59E, 59F, 59G, 59H, 59I, 59J,  
59K, 59L, 59M, 59N, 59O, 59P, 59Q, 59R,  
59S, 59T, 59U, 59V, 59W, 59X, 59Y, 59Z,  
60A, 60B, 60C, 60D, 60E, 60F, 60G, 60H,  
60I, 60J, 60K, 60L, 60M, 60N, 60O, 60P,  
60Q, 60R, 60S, 60T, 60U, 60V, 60W, 60X,  
60Y, 60Z, 61A, 61B, 61C, 61D, 61E, 61F,  
61G, 61H, 61I, 61J, 61K, 61L, 61M, 61N,  
61O, 61P, 61Q, 61R, 61S, 61T, 61U, 61V,  
61W, 61X, 61Y, 61Z, 62A, 62B, 62C, 62D,  
62E, 62F, 62G, 62H, 62I, 62J, 62K, 62L,  
62M, 62N, 62O, 62P, 62Q, 62R, 62S, 62T,  
62U, 62V, 62W, 62X, 62Y, 62Z, 63A, 63B,  
63C, 63D, 63E, 63F, 63G, 63H, 63I, 63J,  
63K, 63L, 63M, 63N, 63O, 63P, 63Q, 63R,  
63S, 63T, 63U, 63V, 63W, 63X, 63Y, 63Z,  
64A, 64B, 64C, 64D, 64E, 64F, 64G, 64H,  
64I, 64J, 64K, 64L, 64M, 64N, 64O, 64P,  
64Q, 64R, 64S, 64T, 64U, 64V, 64W, 64X,  
64Y, 64Z, 65A, 65B, 65C, 65D, 65E, 65F,  
65G, 65H, 65I, 65J, 65K, 65L, 65M, 65N,  
65O, 65P, 65Q, 65R, 65S, 65T, 65U, 65V,  
65W, 65X, 65Y, 65Z, 66A, 66B, 66C, 66D,  
66E, 66F, 66G, 66H, 66I, 66J, 66K, 66L,  
66M, 66N, 66O, 66P, 66Q, 66R, 66S, 66T,  
66U, 66V, 66W, 66X, 66Y, 66Z, 67A, 67B,  
67C, 67D, 67E, 67F, 67G, 67H, 67I, 67J,  
67K, 67L, 67M, 67N, 67O, 67P, 67Q, 67R,  
67S, 67T, 67U, 67V, 67W, 67X, 67Y, 67Z,  
68A, 68B, 68C, 68D, 68E, 68F, 68G, 68H,  
68I, 68J, 68K, 68L, 68M, 68N, 68O, 68P,  
68Q, 68R, 68S, 68T, 68U, 68V, 68W, 68X,  
68Y, 68Z, 69A, 69B, 69C, 69D, 69E, 69F,  
69G, 69H, 69I, 69J, 69K, 69L, 69M, 69N,  
69O, 69P, 69Q, 69R, 69S, 69T, 69U, 69V,  
69W, 69X, 69Y, 69Z, 70A, 70B, 70C, 70D,  
70E, 70F, 70G, 70H, 70I, 70J, 70K, 70L,  
70M, 70N, 70O, 70P, 70Q, 70R, 70S, 70T,  
70U, 70V, 70W, 70X, 70Y, 70Z, 71A, 71B,  
71C, 71D, 71E, 71F, 71G, 71H, 71I, 71J,  
71K, 71L, 71M, 71N, 71O, 71P, 71Q, 71R,  
71S, 71T, 71U, 71V, 71W, 71X, 71Y, 71Z,  
72A, 72B, 72C, 72D, 72E, 72F, 72G, 72H,  
72I, 72J, 72K, 72L, 72M, 72N, 72O, 72P,  
72Q, 72R, 72S, 72T, 72U, 72V, 72W, 72X,  
72Y, 72Z, 73A, 73B, 73C, 73D, 73E, 73F,  
73G, 73H, 73I, 73J, 73K, 73L, 73M, 73N,  
73O, 73P, 73Q, 73R, 73S, 73T, 73U, 73V,  
73W, 73X, 73Y, 73Z, 74A, 74B, 74C, 74D,  
74E, 74F, 74G, 74H, 74I, 74J, 74K, 74L,  
74M, 74N, 74O, 74P, 74Q, 74R, 74S, 74T,  
74U, 74V, 74W, 74X, 74Y, 74Z, 75A, 75B,  
75C, 75D, 75E, 75F, 75G, 75H, 75I, 75J,  
75K, 75L, 75M, 75N, 75O, 75P, 75Q, 75R,  
75S, 75T, 75U, 75V, 75W, 75X, 75Y, 75Z,  
76A, 76B, 76C, 76D, 76E, 76F, 76G, 76H,  
76I, 76J, 76K, 76L, 76M, 76N, 76O, 76P,  
76Q, 76R, 76S, 76T, 76U, 76V, 76W, 76X,  
76Y, 76Z, 77A, 77B, 77C, 77D, 77E, 77F,  
77G, 77H, 77I, 77J, 77K, 77L, 77M, 77N,  
77O, 77P, 77Q, 77R, 77S, 77T, 77U, 77V,  
77W, 77X, 77Y, 77Z, 78A, 78B, 78C, 78D,  
78E, 78F, 78G, 78H, 78I, 78J, 78K, 78L,  
78M, 78N, 78O, 78P, 78Q, 78R, 78S, 78T,  
78U, 78V, 78W, 78X, 78Y, 78Z, 79A, 79B,  
79C, 79D, 79E, 79F, 79G, 79H, 79I, 79J,  
79K, 79L, 79M, 79N, 79O, 79P, 79Q, 79R,  
79S, 79T, 79U, 79V, 79W, 79X, 79Y, 79Z,  
80A, 80B, 80C, 80D, 80E, 80F, 80G, 80H,  
80I, 80J, 80K, 80L, 80M, 80N, 80O, 80P,  
80Q, 80R, 80S, 80T, 80U, 80V, 80W, 80X,  
80Y, 80Z, 81A, 81B, 81C, 81D, 81E, 81F,  
81G, 81H, 81I, 81J, 81K, 81L, 81M, 81N,  
81O, 81P, 81Q, 81R, 81S, 81T, 81U, 81V,  
81W, 81X, 81Y, 81Z, 82A, 82B, 82C, 82D,  
82E, 82F, 82G, 82H, 82I, 82J, 82K, 82L,  
82M, 82N, 82O, 82P, 82Q, 82R, 82S, 82T,  
82U, 82V, 82W, 82X, 82Y, 82Z, 83A, 83B,  
83C, 83D, 83E, 83F, 83G, 83H, 83I, 83J,  
83K, 83L, 83M, 83N, 83O, 83P, 83Q, 83R,  
83S, 83T, 83U, 83V, 83W, 83X, 83Y, 83Z,  
84A, 84B, 84C, 84D, 84E, 84F, 84G, 84H,  
84I, 84J, 84K, 84L, 84M, 84N, 84O, 84P,  
84Q, 84R, 84S, 84T, 84U, 84V, 84W, 84X,  
84Y, 84Z, 85A, 85B, 85C, 85D, 85E, 85F,  
85G, 85H, 85I, 85J, 85K, 85L, 85M, 85N,  
85O, 85P, 85Q, 85R, 85S, 85T, 85U, 85V,  
85W, 85X, 85Y, 85Z, 86A, 86B, 86C, 86D,  
86E, 86F, 86G, 86H, 86I, 86J, 86K, 86L,  
86M, 86N, 86O, 86P, 86Q, 86R, 86S, 86T,  
86U, 86V, 86W, 86X, 86Y, 86Z, 87A, 87B,  
87C, 87D, 87E, 87F, 87G, 87H, 87I, 87J,  
87K, 87L, 87M, 87N, 87O, 87P, 87Q, 87R,  
87S, 87T, 87U, 87V, 87W, 87X, 87Y, 87Z,  
88A, 88B, 88C, 88D, 88E, 88F, 88G, 88H,  
88I, 88J, 88K, 88L, 88M, 88N, 88O, 88P,  
88Q, 88R, 88S, 88T, 88U, 88V, 88W, 88X,  
88Y, 88Z, 89A, 89B, 89C, 89D, 89E, 89F,  
89G, 89H, 89I, 89J, 89K, 89L, 89M, 89N,  
89O, 89P, 89Q, 89R, 89S, 89T, 89U, 89V,  
89W, 89X, 89Y, 89Z, 90A, 90B, 90C, 90D,  
90E, 90F, 90G, 90H, 90I, 90J, 90K, 90L,  
90M, 90N, 90O, 90P, 90Q, 90R, 90S, 90T,  
90U, 90V, 90W, 90X, 90Y, 90Z, 91A, 91B,  
91C, 91D, 91E, 91F, 91G, 91H, 91I, 91J,  
91K, 91L, 91M, 91N, 91O, 91P, 91Q, 91R,  
91S, 91T, 91U, 91V, 91W, 91X, 91Y, 91Z,  
92A, 92B, 92C, 92D, 92E, 92F, 92G, 92H,  
92I, 92J, 92K, 92L, 92M, 92N, 92O, 92P,  
92Q, 92R, 92S, 92T, 92U, 92V, 92W, 92X,  
92Y, 92Z, 93A, 93B, 93C, 93D, 93E, 93F,  
93G, 93H, 93I, 93J, 93K, 93L, 93M, 93N,  
93O, 93P, 93Q, 93R, 93S, 93T, 93U, 93V,  
93W, 93X, 93Y, 93Z, 94A, 94B, 94C, 94D,  
94E, 94F, 94G, 94H, 94I, 94J, 94K, 94L,  
94M, 94N, 94O, 94P, 94Q, 94R, 94S, 94T,  
94U, 94V, 94W, 94X, 94Y, 94Z, 95A, 95B,  
95C, 95D, 95E, 95F, 95G, 95H, 95I, 95J,  
95K, 95L, 95M, 95N, 95O, 95P, 95Q, 95R,  
95S, 95T, 95U, 95V, 95W, 95X, 95Y, 95Z,  
96A, 96B, 96C, 96D, 96E, 96F, 96G, 96H,  
96I, 96J, 96K, 96L, 96M, 96N, 96O, 96P,  
96Q, 96R, 96S, 96T, 96U, 96V, 96W, 96X,  
96Y, 96Z, 97A, 97B, 97C, 97D, 97E, 97F,  
97G, 97H, 97I, 97J, 97K, 97L, 97M, 97N,  
97O, 97P, 97Q, 97R, 97S, 97T, 97U, 97V,  
97W, 97X, 97Y, 97Z, 98A, 98B, 98C, 98D,  
98E, 98F, 98G, 98H, 98I, 98J, 98K, 98L,  
98M, 98N, 98O, 98P, 98Q, 98R, 98S, 98T,  
98U, 98V, 98W, 98X, 98Y, 98Z, 99A, 99B,  
99C, 99D, 99E, 99F, 99G, 99H, 99I, 99J,  
99K, 99L, 99M, 99N, 99O, 99P, 99Q, 99R,  
99S, 99T, 99U, 99V, 99W, 99X, 99Y, 99Z,  
100A, 100B, 100C, 100D, 100E, 100F, 100G,  
100H, 100I, 100J, 100K, 100L, 100M, 100N,  
100O, 100P, 100Q, 100R, 100S, 100T, 100U,  
100V, 100W, 100X, 100Y, 100Z

THESE 39 UNITS SOLD  
IN THE LAST 18 MONTHS  
ONLY 2 UNITS  
CURRENTLY FOR SALE

A Great Opportunity for  
Villas at Kehalani  
As of November 22, 2021  
— 1 Active Listings —  
— 1 Pending Sales —  
— 9 Units Sold since Jan. 1, 2020 —

2021 Through Oct. 51%  
Maui Condos  
Sold at or  
Over List Price

2021 Through Oct. 44%  
Maui Condo  
Sales were  
Cash Sales

To Find Out Why Now Is the  
Best Time to be on Market  
Call Us Today

Halama Street • Elegant Ocean Front Estate





WELCOME TO

# WAILEA POINT 402

WAILEA POINT'S PREMIER LOCATION:  
'THE POINT OF THE POINT'

PROPERTY FEATURES & DETAILS





## WELCOME TO WAILEA POINT 402

---



Wailea Point is Maui's most revered condominium resort property bar none! Unit 402, an upper level full floor unit, was designed by the original developer as his personal residence and has only been offered for sale once until now. Simply stated; it is 'The Location' on the Point of Wailea Point's verdant, meticulously landscaped, 28 oceanfront acres. The interior design optimizes the 200 degree dynamic coastal, panoramic ocean & outer island views, enhanced by ever changing painterly year round sunsets. While one is compelled to ponder the ocean views in every direction, the soaring 20+ foot ceilings & custom finishes throughout speak 'elegance'.

The 'velvet to the touch' Venetian plaster walls compliment the sheen of the 24" X 36" polished limestone tile flooring. One's culinary expressions are enhanced by SubZero, Wolf, Gaggenau, Bosch, Fisher-Paykel, Dacor & Blanco Steel Art appliances, framed by almond lacquered cabinetry, a Voguebay glass mosaic back-splash & the specimen quality 'Capo-lavoro' granite island. Custom, book-matched Hawaiian Koa wood cabinetry, floors, doors & beams add warmth throughout. The spacious master & guest master suites offer luxurious en-suite spa quality baths. Both the den with it's en-suite bath & the spacious office, offer closet space, have compelling ocean views, & may serve as bedrooms 3 & 4. A custom Koa, Wenge-wood & beveled glass stairway leads to a grand mezzanine offering pastoral Up-country & Haleakala views, a dedicated full bath & walk-in closet, & may possibly serve as a fifth bedroom. Maui's finest beaches, serving both the neighboring Four Seasons & Fairmont Resorts border this luxurious secure gated oasis. World class golf, tennis, fine dining, shopping, spas & art galleries are adjacent valued amenities. Two pool & spa pavilions host community gatherings & are available for owner's private use.





*The Wailea Resort is revered world-wide for its spectacular climate, beaches, golf, tennis, fine dining and shopping.*



## THE HISTORY OF WAILEA POINT

---



In ancient times, Hawaiians lived on the slopes of Haleakala near Wailea, where they grew sweet potatoes. Legend has it that the Hawaiian goddess of canoe builders, Lea, transformed into the beautiful ‘elepaio (a forest bird) and would fly over the shoreline of this extraordinary coast, watching over the canoe builders. The area became known as Wailea, the “Waters of Lea.” The Great Mahele land redistribution proposed by King Kamehameha III enacted in 1848 led to cattle raising becoming the dominant feature on these slopes and the eventual formation of the Ulupalakua Ranch.

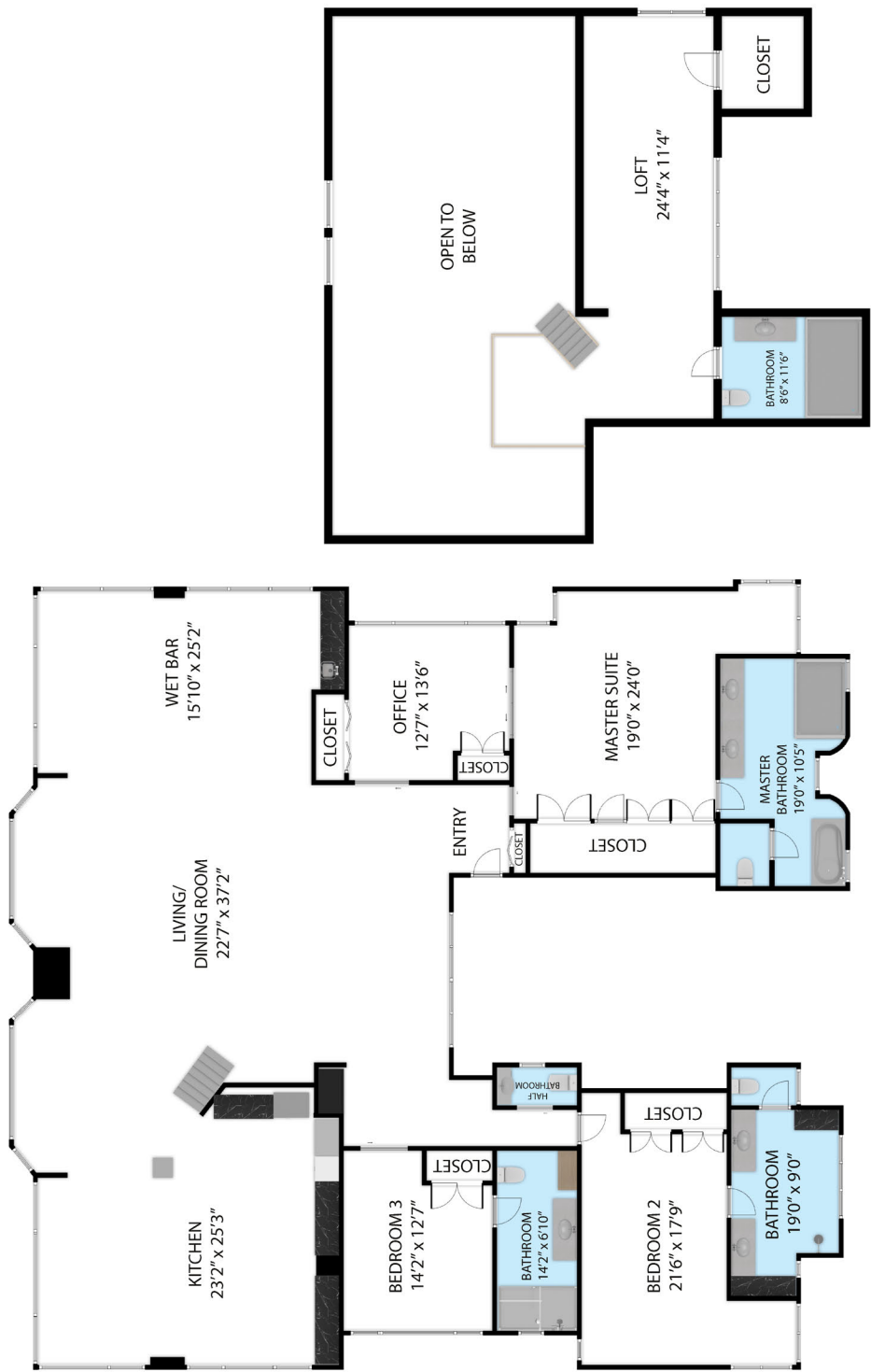
In 1955, plans started developing to transform 1500 acres of the Ulupalakua Ranch into an integrated residential resort community. The Wailea Development Company was formed in 1971 and began developing the first-class community that now thrives in Wailea. With the beautiful white sand beaches of Keawakapu, Mokapu, Ulua, and Wailea fronting the planned resort area, it certainly seemed a perfect location.

In 1983, Clyde “Bud” Wagner had a vision of building the most exemplary condominium project in Hawaii; he achieved this with the completion of Wailea Point. The official groundbreaking ceremony was held on November 30, 1984. By March 1988, all 130 units were either sold or under contract. Since then, the property has been the recipient of numerous awards and has attained international acclaim for its quality of design, materials, and artistry. The beauty and serenity of Wailea Point is an inspiration to those who live in the community and visit.

Wailea Point’s rare oceanfront location provides breath-taking ocean views. This picturesque environment sets this property apart from others. Protected by a rocky lava coastline and nestled between two of the world’s most famous beaches—Wailea Beach and Polo Beach, this 26.4-acre property gently slopes upward from the ocean to provide enchanting views. Owners can also enjoy the luxury of the nearby Four Seasons Resort and the Fairmont Kea Lani to experience the 5-star dining and lifestyle they offer.



# WALEA POINT 402 FLOOR PLAN



4000 Wailea Alanui Drive, Kihei 96753

TOTAL APPROX. FLOOR AREA 4,234 SQ.FT

Whilst every attempt has been made to ensure the accuracy of the floor plan contained here, measurements of doors, windows, rooms and any other items are approximate and no responsibility is taken for any error, omission, or misstatement. This plan is for illustrative purposes only and should be used as such by any prospective purchaser.



# SITE MAP

## WAILEA POINT





## FEATURES OF WAILEA POINT 402

---

### **LAYOUT:**

The main floor features two master bedrooms each with en-suite baths, a third bedroom with en-suite bath, and a powder room. An office with a closet on the main floor may serve as a fourth bedroom. The mezzanine level features a loft bedroom, a full bath and a walk-in closet.

### **SIZE:**

Approximately 4700 sq. ft.

### **AIR CONDITIONING AND AIRFLOW:**

The home is fully air conditioned with two condensers set away from the building and two ceiling handlers to eliminate noise when operating.

The north and south ends of the main floor feature motorized windows which when open take advantage of the prevailing trade winds thereby creating Maui natural 'air-conditioning.'

### **SMART HOUSE:**

There is a Crestron Smart Home System to control lighting, window coverings, main TVs, Sonos surround sound, along with the ability to accommodate additions.

### **GARAGE:**

There is a two car garage and a spacious attic storage area.

### **INTERIOR FEATURES:**

The interior spaces have Venetian-plastered walls for beauty and ease of cleaning.

There is extensive recessed ceiling and controllable ambient lighting.

The main living room and mezzanine areas feature two sets of motorized window shades.

### **BATHROOM FEATURES:**

Specimen Granite countertops.

Floor to ceiling tile with designed glass accent tiles in all baths.

Low-flush Toto toilets.

### **KITCHEN FEATURES:**

Specimen granite countertops.

Gaggenau Side opening ovens.

Wolf Induction Cooktop.

Bosch & Fisher Paykel dishwashers.

Microwave drawer.

Two Blanco stainless Steel Art sinks.

High-power Gaggenau range hood fan.

Unique wall-mounted restaurant grade Salamander grille.

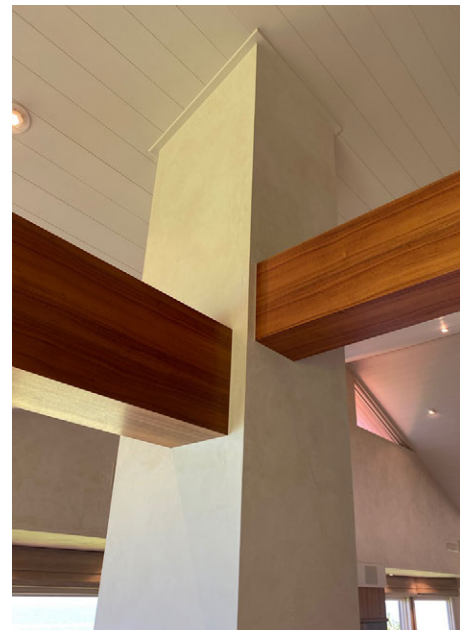


# INTERIOR DETAILS

## GREAT ROOM



- ◆ A fabulous custom Hawaiian Koa wood entertainment equipment cabinet with book-matched burl-wood door features.
- ◆ The architectural beams in the great room are clad in Hawaiian Koa wood





# INTERIOR DETAILS

## KITCHEN



- ◆ Detail of almond white lacquered kitchen cabinetry, absolute black granite counter-top, stainless steel drawer pulls, and stainless steel appliance garage.

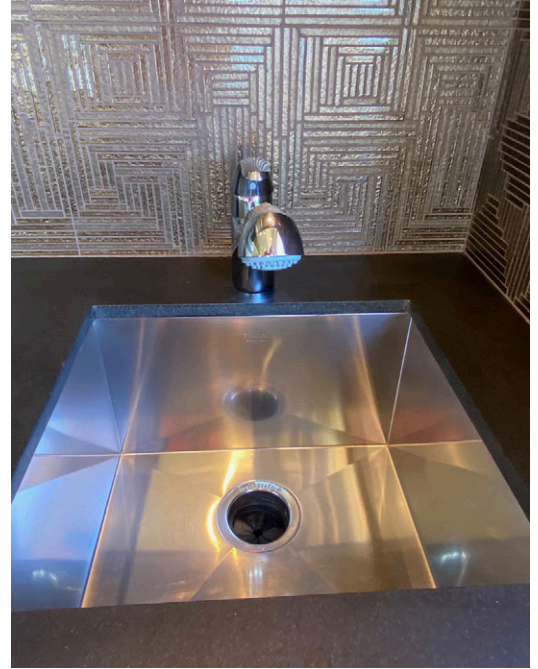
- ◆ Subzero Stainless Steel 48 " Side by Side fridge.



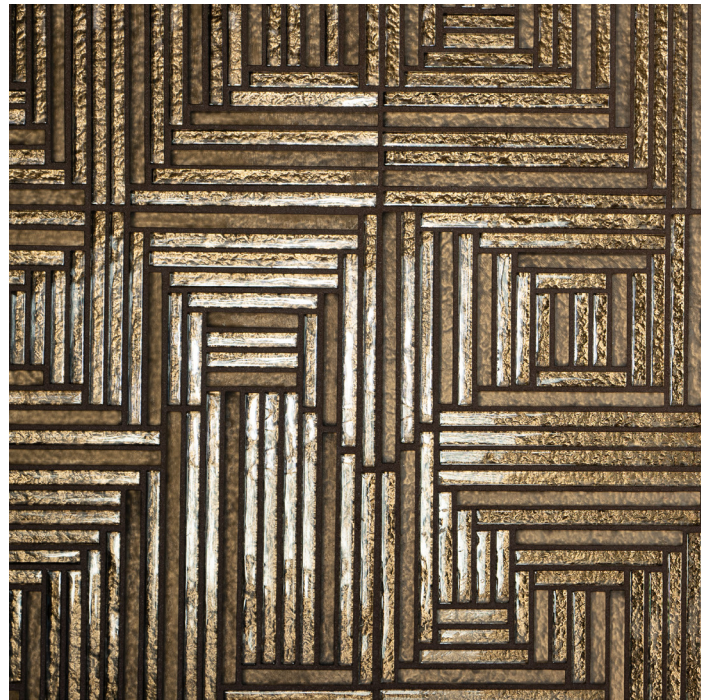


# INTERIOR DETAILS

## KITCHEN



- ◆ Commercial Salamander Wall Mounted Stainless Steel Grille. Iridized Voguebay glass 'Crossover Mosaic' wall tile. Absolute black granite counter and stainless steel prep sink.
- ◆ Detail of Blanco Steel-Art prep-sink.
- ◆ Detail of Iridized Voguebay glass 'Crossover Mosaic' wall tile.



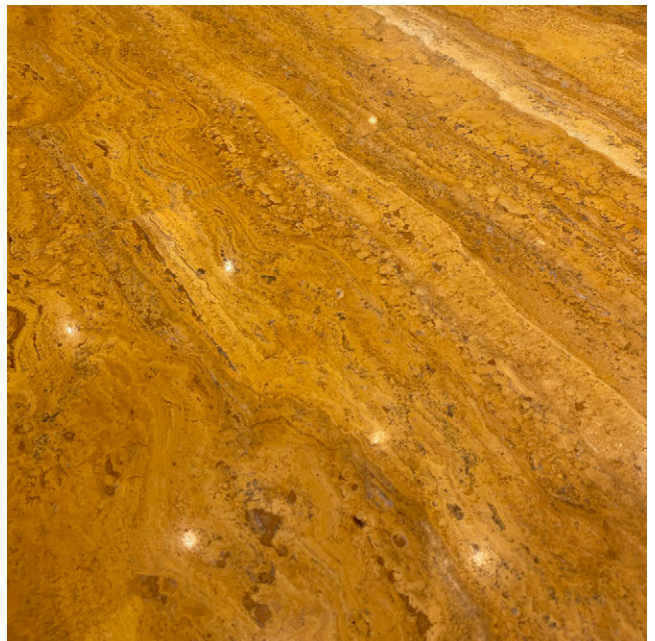


## INTERIOR DETAILS

### MASTER BATHROOM



- ◆ The dual vanity master bathroom countertop is rendered in Persian Gold travertine.
- ◆ The master bath cabinetry is vertically book-matched gloss finished Hawaiian Koa wood with polished chrome drawer pulls.
- ◆ Master bath walls are faced with travertine. The Grand Wall Sconces are by 'Pavia'.
- ◆ The curved floor-to-ceiling shower wall feature tile is by Island Stone, in a matte glass finish.







*Unit 402, an upper-level full-floor unit, was designed by the original developer as his personal residence & has only been offered for sale once since until now. Simply stated; it is 'The Location' on the Point of Wailea Point's verdant, meticulously landscaped, 28 oceanfront acres.*





**Kihei Designer Residence | 5Bd/5Ba | 5,000 s.f.**  
Listed at \$3,695,000 | Learn more at [SouthMaui.info](http://SouthMaui.info)



**Oceanview Lot | .544 Acres | Utilities to Site**  
Ready to Build | \$4,395,000 | [5159Makena.info](http://5159Makena.info)



**Wailea Ocean View Residence | 4Bd/3Ba | 3,195 s.f.**  
Listed at \$3,200,000 | Learn more at [Wailea-Kialoa.info](http://Wailea-Kialoa.info)



**42+Ac. Mesmerizing Oceanfront | Kahekili.info | \$1,845,000**

## Offering Four Exceptional Maui Opportunities ♦ We Would be Honored to Help You!

We have helped hundreds of clients buy and sell Maui real estate over 34+ years. Together we offer over 55 years of combined Maui real estate experience. We are dedicated to accomplishing your goals and working in your best interest. We have been active Realtors on Maui since the mid-1980s.

In 2021 we represented Sellers and Buyers in transactions totaling over \$137M.

Our experience through many real estate market cycles provides valuable insight into our market's history and direction. We will educate you on how Maui has historically dovetailed with the mainland U.S. and worldwide real estate markets. We are consistently acknowledged among the top ten brokers in annual production on Maui, amongst over 1700 agents. We have been recognized as the only Maui Realtors to be "Top 100 State of Hawaii Realtors" amongst over 14,000 Hawaii Realtors for sixteen consecutive years. Our team is honored by our client's trust and confidence, and we are devoted to serving as their Proactive Maui Real Estate Advisors. We invite you to contact us for a confidential discussion regarding your Maui real estate goals.

Learn more at: [www.MauiRealEstateAdvisors.com](http://www.MauiRealEstateAdvisors.com)



**Robert H. "Robbie" Dein**  
Broker-Realtor/Owner  
ABR, CRS, RSPS, RB-18398  
(808) 250-3564  
[Robbie@MauiRealEstateAdvisors.com](mailto:Robbie@MauiRealEstateAdvisors.com)



**Maui  
Real Estate  
Advisors LLC**

**Kenneth M. "Ken" Hayo**  
Principal Broker/Owner  
RB-15529  
(808) 283-8435

[Ken@MauiRealEstateAdvisors.com](mailto:Ken@MauiRealEstateAdvisors.com)



**Maui's Only Realtor Recognized as a 'Top 100 State of Hawaii Realtor' Among 15,000 + Hawaii Realtors (for 16 Consecutive Years).**

This information is deemed reliable, but has been supplied by third parties and is not guaranteed. Buyer to do own due diligence.





ELEGANCE AT WAILEA KIALOA ♦ 168 W IKEA MOKU PLACE

















## MALULANI AT WAILEA KIALOA

168 W Ikea Moku Place ♦ Wailea, Maui, HI  
A Family Retreat Residence ♦ Lovely Ocean Views  
4 Bedrooms, 4.5 Baths ♦ 5,686 s.f.  
[WaileaKialoa.info](http://WaileaKialoa.info)

This consciously renovated 4 bed / 4.5 bath, 5686 s.f., Ocean View, Wailea Kialoa Home is a family resort. Our Seller's creatively envisioned life's everyday activities & renovated this residence to complement that Maui lifestyle. As you descend from the quiet cul-de-sac towards the elegant front doors you find yourself amidst a tropical grotto & immediately know You are at Home at "Malulani." Upon entering, one feels a luxurious spaciousness, as you glance across the electronic wall art at the beckoning Great & Dining rooms below & above towards, the master suites! Black aluminum railings & stainless cable border the Travertine stone stairs; an elegant juxtaposing of contemporary & natural. A richly colored slab of specimen granite defines the dining area adjacent to the kid's eat-in kitchen counter, which opens to the chef's dream 'Kitchen in the Round' where an abundance of culinary accoutrements are at your fingertips! A delightful spacious butler's pantry/prep room feels like a 'Now You're Cooking' store supporting your inner-chef. Alternatively, choose to dine in the round, as you gaze through four sets of 8 ft. tall double French doors, overlooking the pool, spa & gardens. Try and beckon your guests away from your 'In Home Sports Room/Bar'. Enjoy intimate conversation in the den entertainment area or in the great room across from the baby-grand. Two guest bedrooms with en-suite bathrooms are on the main level. Dual ocean view primary suites, upstairs, encompass their own mini-living rooms; cozy places to curl up & read after bidding good night! Under the covered lanai, adjacent to the pool & spa, is a built-in BBQ & drink fridge! The alfresco garden shower is a real treat! Solar Electric, Tesla Power Wall Back-up Batteries & Wall Chargers Installed!

This material is based upon information which we consider reliable, supplied by third parties. Buyer to do own due diligence. It is not our intention to solicit the offering of other real estate brokers. We are happy to work with them and cooperate fully.



# KE ALII OCEAN VILLAS

THESE 12 UNITS SOLD  
IN THE LAST 12 MONTHS

A-102, A-204, A-302,  
B-105, B-204, C-302,  
D-103, E-101, E-103,  
H-102, H-103, M-102

AS OF 8/10/21:

**ONLY 1 ACTIVE UNIT**

0 PENDING UNITS





## From A Colleague:

“I am truly amazed at the standard you set for marketing your listings. If other agents did the job half as well as you do, we would have no inventory. I truly admire how you present your properties, price and stage them well, and are always upbeat about promoting them. As a peer and competitor, you set the bar at a level that is tough to get over.”

— Tracy Stice, Past President Hawaii Association of Realtors & Realtor Association of Maui

**On Maui, Demand is Significantly Greater than Supply!** The Latest Sales Comparables are pushing above the recent past Sold prices. **Buyers are reaching out to us regularly!** Our combined 55+ years of marketing, negotiation, and contract experience is why we have closed over \$600+ million in sales. Our results and our clients speak for themselves. Extensive reference list available!

— **Call Ken and Robbie Today to Discuss Your Unit's Potential Value** —



**Robert H. 'Robbie' Dein**

Realtor-Broker/Owner  
ABR, CRS, RSPS, RB-18398

**Direct (808) 250-3564**

Robbie@MauiRealEstateAdvisors.com



**Kenneth M. 'Ken' Hayo**

Principal Broker/Owner  
RB-15529

**Direct (808) 283-8435**

Ken@MauiRealEstateAdvisors.com

### **Maui Real Estate Advisors**

161 Wailea Ike Pl, Ste. A-102 ♦ Wailea, HI 96753

*This material is based upon information which we consider reliable, but it has been supplied by third parties.*





**Blessing Others With Our Blessings**





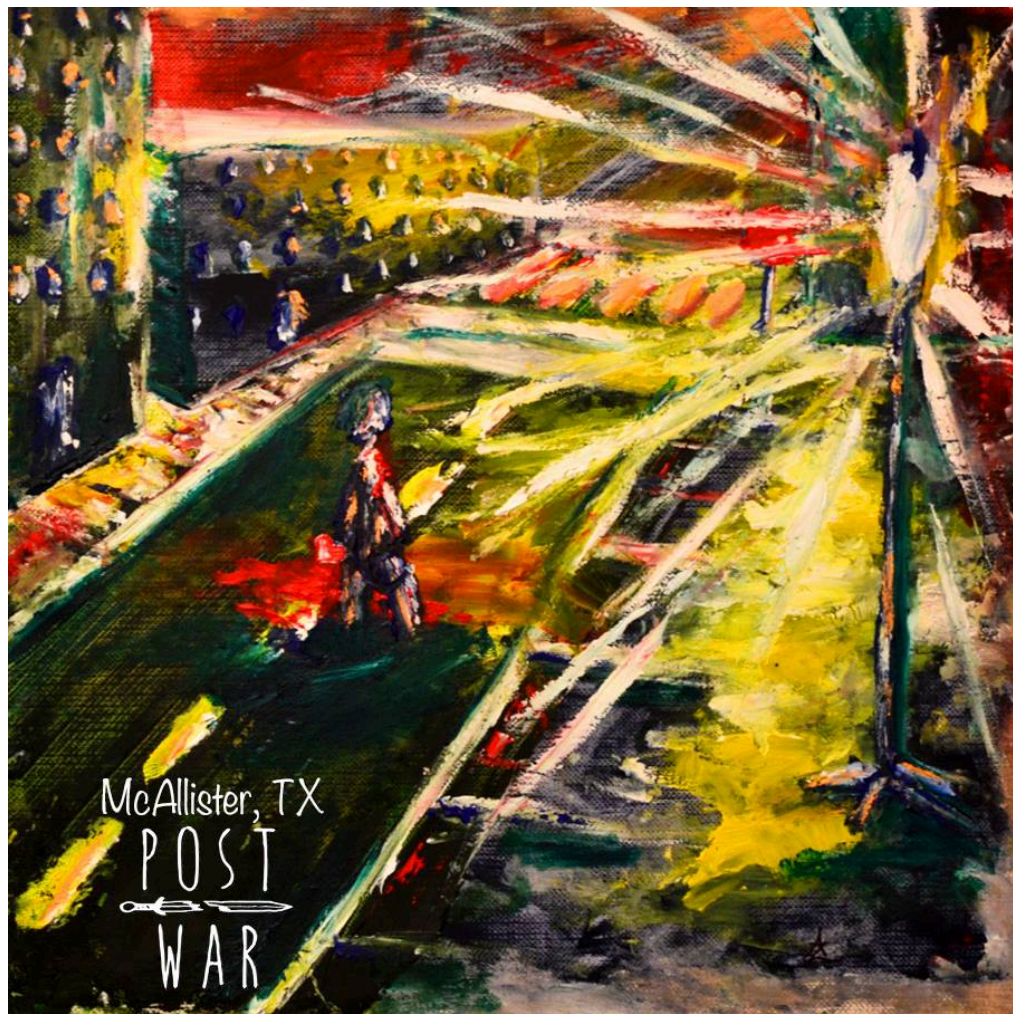
# TWO CLOTHS AND A BARREL



WITH  
BIG O  
CAPTAIN NERK  
BULLDOZERBOY  
SMILE VICTORIA

7TH CIRCLE MUSIC COLLECTIVE  
SATURDAY, FEB. 10, 2018  
7:00PM - ALL AGES





McAllister, TX  
POST  
WAR